

# EXL Headlock Installation Guide

**SENECA**

DAIRY SYSTEMS



Innovation - Experience - Support

POWERED BY SENECA IRON WORKS

5DOC33175

rev. 03/22

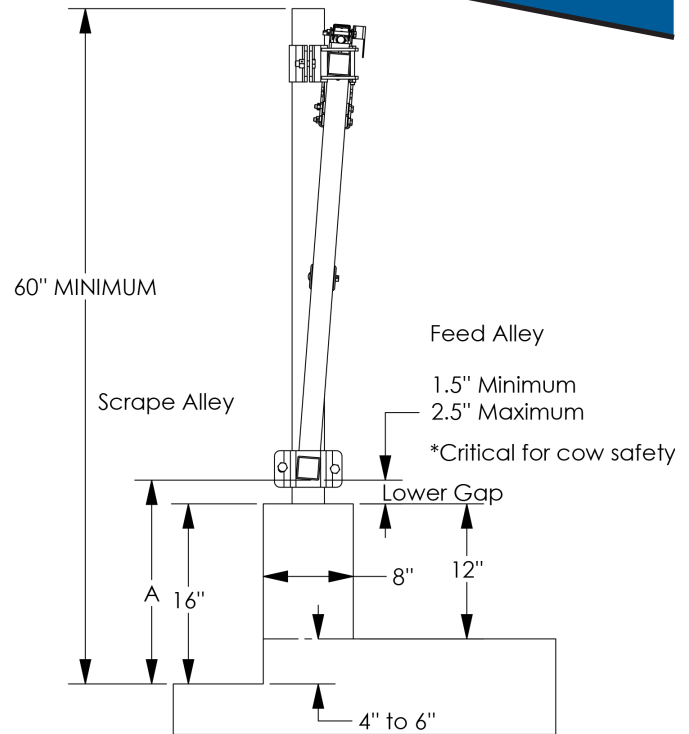
**Step 1:** Determine mount height of top bracket based on mounting height chart.

**Lockup Mounting Height Chart:**

	Cow Locks	Heifer Locks	Calf Locks
Weight	800 lbs-1500 lbs	450 lbs-800 lbs	200 lbs-450 lbs
Mounting Height (A)	18" - 20"	16" - 18"	12" - 16"

\* Critical for cow comfort

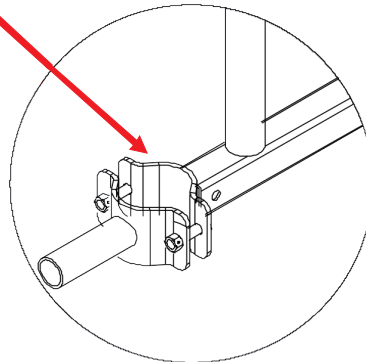
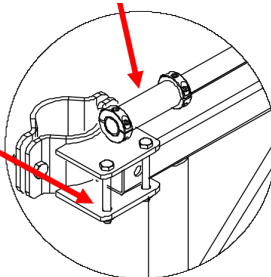
**Step 2:** Mount top brackets in a straight line. Use laser if available. *Hint: Mounting top brackets in a straight line will greatly improve the ease of installation and performance of lockups. Use laser level if possible. Do not follow concrete as it often varies due to normal construction tolerances.*



**Step 3:** Hang lockups on top bracket with the **counterweight on the cow side**. Install vertical bolts, snug nuts to secure, but do not tighten completely.

**Step 4:** Trim bottom square tube ends to fit between the posts. Insert bottom clamp into tube. Tip in between posts and secure clamp. Once bottom is secure, tighten bolts in the top clamp.

**Control Rod Connector**



**Clamp On UHM Kit**

- 2½", 3", 4" weld on or wood post (See reverse for Document #)

**IMPORTANT:**

When installing Slant Bar panels and Headlock panels, the installer **MUST** be aware of the Lower Gap (between the bottom of the lowest rail and top of the curb) and adhere to the following dimensional guidelines:

**MINIMUM Gap:** 1.5" This keeps the bottom rail out of manure and feed and increases longevity.

**MAXIMUM Gap:** 2.5" Any gap larger than 2.5" will allow the cow to put their hoof under the lockup and **MAY CAUSE INJURY** to the animal.

**NOTE:**

Since the concrete curb is not always perfectly level (or at a consistent grade) the Lower Gap can vary along the run. **THEREFORE**, a laser should be used to assist the installer in getting the panels as straight as possible while maintaining the Lower Gap tolerances above.

**Clamp On IUHM Kit**

- 2½", 3", 4", weld on or wood post (See reverse for Document #)

**Step 5:** Select which lock you want to mount the handle on. The handle needs to be mounted at the end of the lock. Does not need to be at the end of a row. Install handle lock plate with self-taping screws, center above the upright tube. **See Fig 1.** Then attach the handle to the control rod and tighten double set collars with the handle in the up position. The control rod needs to be in the locked position. (Flippers Down) **See Fig 2.** Attach locking collar onto control rod on the opposite of lock plate with approximately 1/16" of clearance. **See Fig 3.**

**Step 6:** Slide the control connector onto the control rod. Rotate the control rods until all the flippers are down. Control rods should be kept even with the left end of the lock when standing in the feed alley. Tighten connectors.

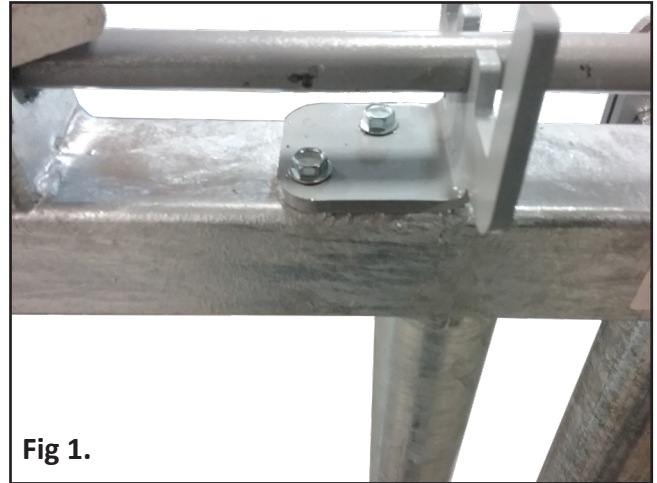


Fig 1.

1/16" Clearance

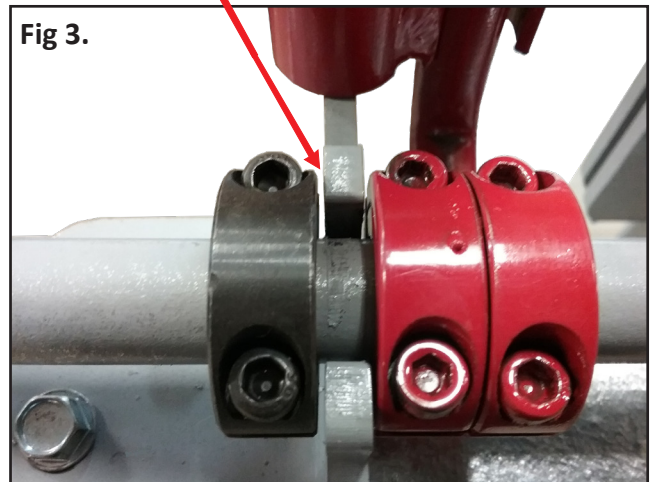


Fig 3.

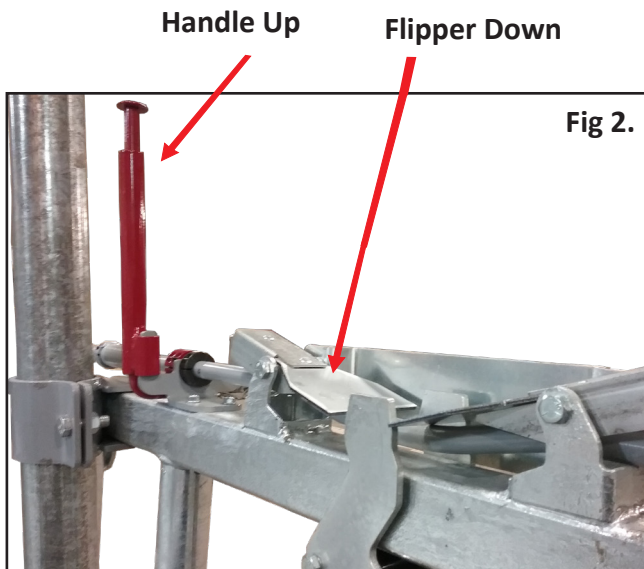


Fig 2.

Size	Clamp On UHM Kit:	Clamp On IUHM Kit:
2 1/2"	3K00498	3K00583
3"	3K00503	3K00599
4"	3K00513	3K00597