

TIE STALLS

5DOC50750

SENECA
DAIRY SYSTEMS



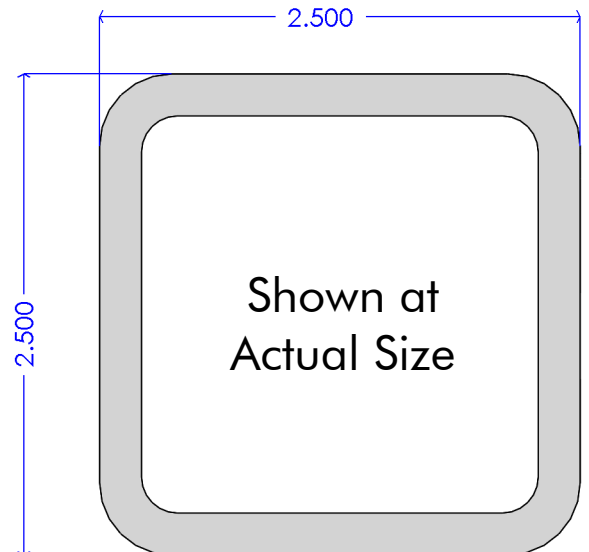
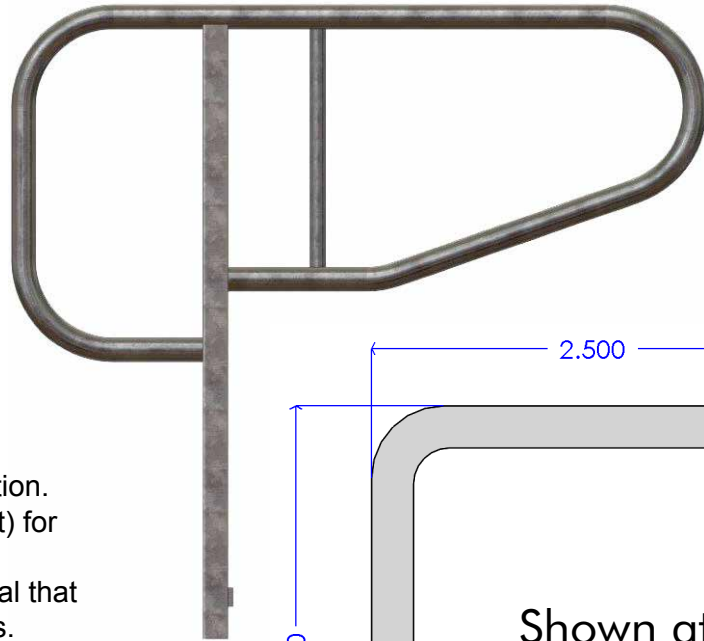
Innovation - Experience - Support

POWERED BY SENECA IRON WORKS

[Model FLD38HD Item # 3T00420]

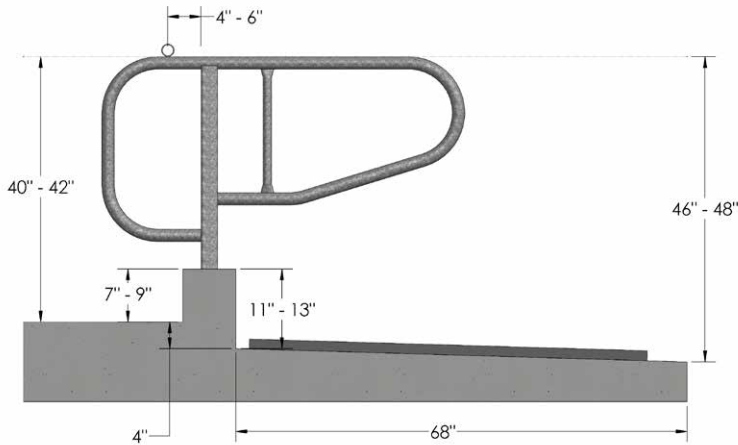
FEATURES:

- Heavy 1.900, 10 gauge loop
- Design and style is a proven technology specially built for the comfort and health of both the animals and the customer.
- 2 ½" sq heavy wall tube is put in with the thought of longevity and strength to take on the toughest jobs and abuse.
- Anti Rotation Key
- Theft bar behind post to keep animals in position. Continuous loop with no welds (except to post) for strength and durability.
- Made with high quality and heavy duty material that our customers have depended on for decades.



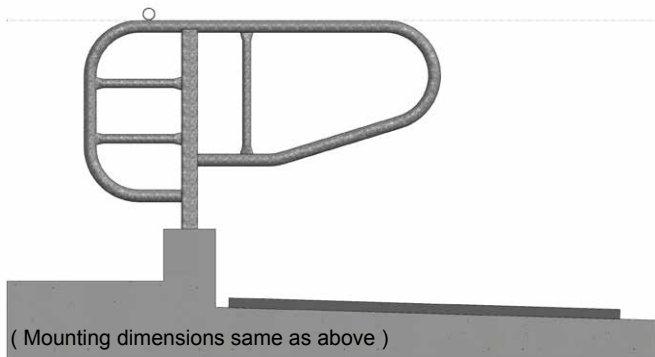
The stall post is a 2 ½ x 2 ½ heavy wall square tube.
The loop is 1.900 x 10 gauge high tensile tube.
Tie stalls are hot dipped galvanized after construction.





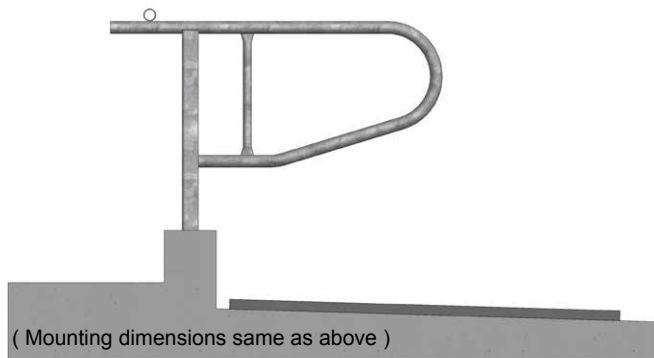
Model - FLD38HD Item #3T00420

The FLD38HD Tiestall is used when you need to install water bowls. The water bowls are also used for a FLTD38HD tiestall. Our theft swing design is to discourage the cows from stealing feed from each other. Full loop in the front is proven to have the extra strength and rigidity you need for the extra abusive animals.



Model - FLTD38HD Item #3T00430

The FLTD38HD Tiestall is used when you do not need water bowls. It is used with the FLD38 when every other stall needs a water bowl. Full loop in the front is proven to have the extra strength and rigidity you need for the extra abusive animals. Theft bars in front is for every other stall with no water bowl. Keeps cows from stealing feed and is added strength to the already toughest stall in the industry.



Model - RLD38HD Item #3T00400

The RLD38HD Tiestall is used primarily when using water trough for watering your cows. It can also be used when a divider is not needed on the front of the stall. This design is for where you need that extra room in the front when renovating.

FOR ALL MODELS:

The stall post is a 2 ½ x 2 ½ heavy wall square tube.
 The loop is 1.900 x 10 gauge high tensile tube.
 Tie stalls are hot dipped galvanized after construction.

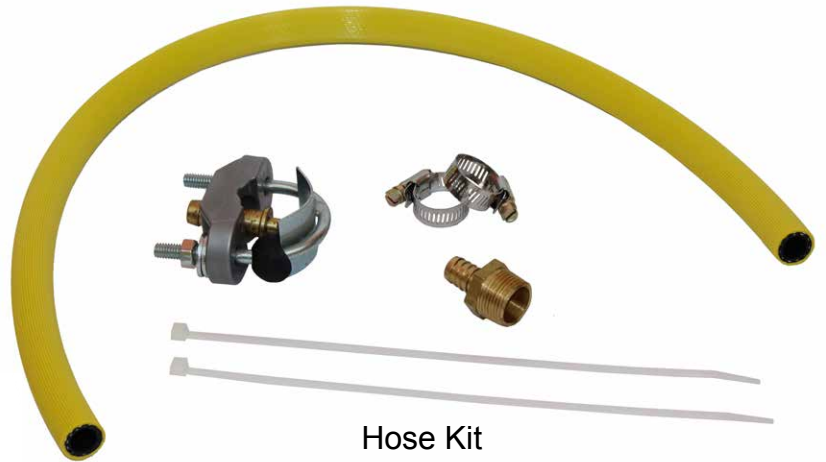
Chain & Snap Combo
 Item - 3T01000



Water Bowl Kit
 Item - 1T00109



1.9 - 1.9 Ubolt clamp
 Item - 3K00148



Hose Kit
 Item - 1T00107



T - Clamp
 Item - 3K00110

SENECA

DAIRY SYSTEMS

Innovation - Experience - Support

POWERED BY SENECA IRON WORKS

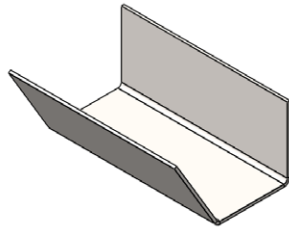


TIE STALLS

Custom Tie Stalls & Accessories



3T01060
8" PVC Clamp



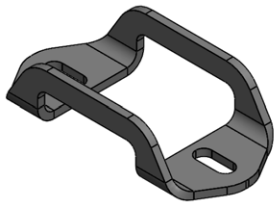
3T01070
Steel Water Trough



3T00190
AT 56



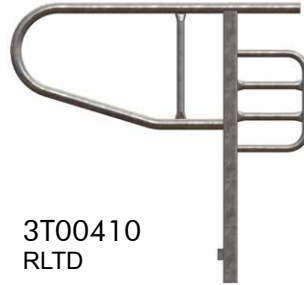
3T00200
AT 66



3T01090
SBACS



3T01080
Swing



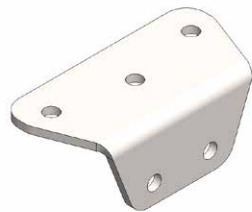
3T00410
RLTD



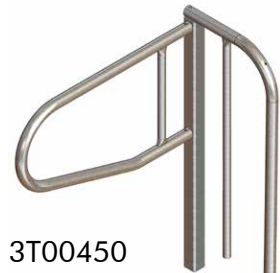
3T00440
RLMS



CUSTOM
** Curb to Ceiling



2T01520
** Curb Mount Plate



3T00450
LLMS



3T00460
FLMS

** Curb to Ceiling or Curb Mount for retrofit is available.

SENECA

Let us know the specifics of your situation and
Seneca can create a custom stall to fit your needs!



SENECA
DAIRY SYSTEMS
Innovation - Experience - Support
POWERED BY SENECA IRON WORKS

(888) 3-SENECA

NEW YORK - MICHIGAN - GEORGIA

senecadairysystems.com

Salesman:

Cellular #: